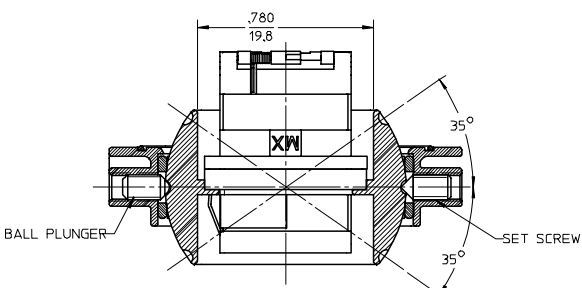


RECOMMENDED MOUNTING PATTERN

- NOTES:
1. ALL DIMENSIONS ARE FOR REFERENCE ONLY.
 2. USE SET SCREW TO FIX MPO ADAPTER IN THE REQUIRED POSITION: -35°, 0° OR +35°.
 3. SWIVEL ADAPTER IS ALSO AVAILABLE AS LC, MU AND SC VERSIONS.



SECTION A-A
SCALE 2.5:1
ADAPTER DUST CAP NOT SHOWN

ENTER DESCRIPTION FC NO: MF2006-0389 DRAWN: PGIBLIN 2005/12/14 CHKD: 2005/12/14 APPR: LGUMIN 2005/12/14 REV: A	QUALITY SYMBOLS ▽=0 ▽=0	GENERAL TOLERANCES (UNLESS SPECIFIED) mm INCH 4 PLACES ± --- ± --- 3 PLACES ± --- ± --- 2 PLACES ± --- ± --- 1 PLACE ± --- ± --- ANGULAR ±1/2°	DIMENSION STYLE IN/MM DRAWN BY DATE PGIBLIN 2005/12/06 CHECKED BY DATE APPROVED BY DATE	SCALE 2:1 DESIGN UNITS INCH THIRD ANGLE PROJECTION	TITLE MPO EMI SWIVEL ADAPTER BALL PLUNGER/SET SCREW VERSION
	MATERIAL NO. 1061149500 DOCUMENT NO. SD-106114-9500 SHEET NO. 1 OF 1		MOLEX INCORPORATED		
	DRAFT WHERE APPLICABLE MUST REMAIN WITHIN DIMENSIONS				
	THIS DRAWING CONTAINS INFORMATION THAT IS PROPRIETARY TO MOLEX INCORPORATED AND SHOULD NOT BE USED WITHOUT WRITTEN PERMISSION				