

4

3

2

1

THIS DRAWING IS UNPUBLISHED.

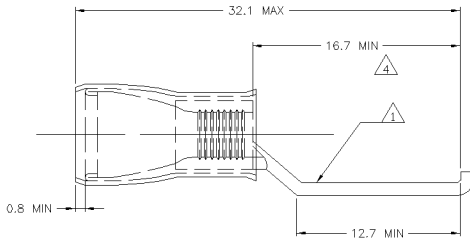
RELEASED FOR PUBLICATION

© COPYRIGHT - BY TYCO ELECTRONICS CORPORATION. ALL RIGHTS RESERVED.

LOC  
G 14

REVISIONS

| REV | DATE | DESCRIPTION           | SIZE    | DRN | APP'D |
|-----|------|-----------------------|---------|-----|-------|
| C1  |      | REV PER ECR 08-018475 | 02AUG06 | JR  | TM    |

AMP  
WIRE RANGE12-10 AWG  
SOLID OR STRANDED

- 1 STAMP AMP 12-10\*, LOCATE APPROX AS SHOWN.
- 2 BODY - COPPER PER ASTM B-152 SLEEVE - COPPER PER ASTM B-152 INSULATION - NYLON
- 3 BODY - TIN PLATE PER ASTM B-545 SLEEVE - TIN PLATE PER ASTM B-545 INSULATION - COLOR, YELLOW
- 4 DIMENSION APPLIES FROM EDGE OF METAL WIRE BBL TO FLANGE.
- 5 WIRE INSULATION DIA 3.8-6.4
- 6 TONGUE MATERIAL THK 1.07 MAX
- 7 FLANGE WIDTH 4.6

| 500 | LOOSE PC    | 151795  |
|-----|-------------|---------|
| QTY | DESCRIPTION | PART NO |

AMP INCORPORATED  
CUSTOMER SERVICE SYSTEMSMAX RECOMMENDED OPERATING  
TEMPERATURE:  
105°C

THIS DRAWING IS A CONTROLLED DOCUMENT.

FOR ADDITIONAL  
PRODUCT INFORMATION OR  
COPIES OF DRAWINGS  
AND TECHNICAL DOCUMENTS

PRODUCT INFORMATION CENTER

1-800-522-6752

FOR APPLICATION

TOOLING ASSISTANCE CENTER

1-800-722-1111

FOR ORDER ENTRY

1-800-526-5142

THIS DRAWING IS A CONTROLLED DOCUMENT FOR  
AMP INCORPORATED. IT IS SUBJECT TO CHANGE  
AND THE CUSTOMER'S ENGINEERING DEPARTMENT  
SHOULD BE CONTACTED FOR THE LATEST REVISION.VOLTAGE RATING:  
300V MAXCIRCULAR MIL AREA:  
2.82-6.64mm<sup>2</sup> (5180-13100)  
SOLID OR STRANDED

DIMENSIONS:

mm

TOLERANCES UNLESS  
OTHERWISE SPECIFIED:

|        |        |
|--------|--------|
| 0 PLC  | ± .    |
| 1 PLC  | ± .    |
| 2 PLC  | ± 0.20 |
| 3 PLC  | ± .    |
| 4 PLC  | ± .    |
| ANGLES | ± .    |

MATERIAL

-

FINISH

-

|                  |               |         |
|------------------|---------------|---------|
| DRN              | JR RUTH       | 02AUG06 |
| CHK              | T. MICHELUTTI | 02AUG06 |
| APP'D            | T. MICHELUTTI | 02AUG06 |
| PRODUCT SPEC     |               |         |
| APPLICATION SPEC |               |         |
| WEIGHT           |               |         |

**tyco**  
Electronics

Tyco Electronics Corporation  
Harrisburg, PA 17105-3608

NAME  
TERMINAL, LIPPED BLADE, P.I.D.G.,  
WIRE SIZE: 12-10 AWG.

| SIZE | DATE  | ISSUE NO | RESTRICTED TO |
|------|-------|----------|---------------|
| A3   | 00779 | C=151795 |               |

CUSTOMER DRAWING

SCALE: S:1 SHEET 1 of 1 REV: C1